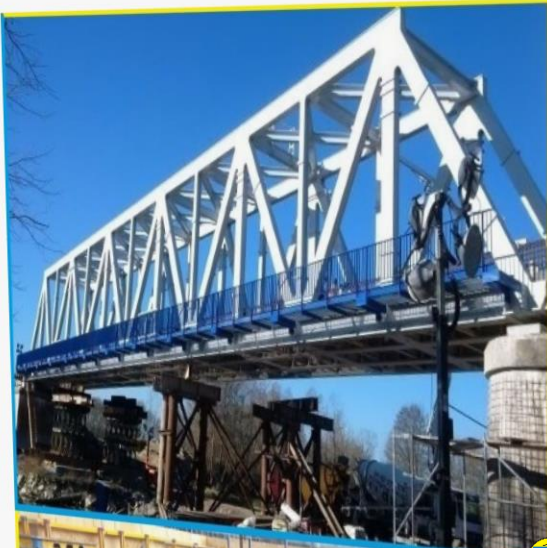


# TARKON



YOUR STEEL WORLD



## ABOUT US

Tarkon was established in Poland within the 'Tarnobrzeg Special Economic Zone EUROPARK WISŁOSAN' in the year 2000. Good organization as well as high quality of steel constructions and services have always been our priorities.

We are a specialized steel construction fabricator and supplier of various steel structures, metal products and industrial installations in a wide range of sectors.



We have been able to reach our strong market position in such a short time thanks to:

- ✓ COMPETITIVE PRICES AND HIGH QUALITY PERFORMANCE
- ✓ MODERN EQUIPMENT, CONTINUOUS INVESTMENT AND IMPROVEMENT
- ✓ ADAPTING INNOVATIVE TECHNICAL SOLUTIONS WORLDWIDE
- ✓ RELIABLE MANAGEMENT WITH POSITIVE ATTITUDE TO BUSINESS
- ✓ HIGHLY QUALIFIED EMPLOYEES AND UP-TO-DATE TRAININGS OF OUR STAFF
- ✓ FAST, FLEXIBLE AND RELIABLE DELIVERY DATES
- ✓ NEW TECHNOLOGY IMPLEMENTATION

We deliver and install steel constructions for the Polish & EU markets but also foreign export markets. Professional knowledge of the experienced and highly qualified staff and production facilities allow us to make the most advanced projects according to our client's requests. We offer the best technical support at all stages of projects: from engineering & design – always in accordance with EU regulations – through fabrication, grit blasting, metallization or hot dip galvanization and airless painting of the steel constructions, to on-site erection and after-sales service.

Providing good after-sales service is one of our main goals – in order to build a long-term relationship with our Clients, to earn their loyalty and keep their business.

Our price policy allows us to produce welded steel constructions at the most competitive prices.

In 2012 we gained our 5th workshop of 2500 m<sup>2</sup> with professional painting/sandblasting facilities. Also, an automatic CNC Voortman line for cutting and drilling profiles till 1050mm and another CNC Voortman machine for drilling plates became operational. In 2017 we built our 6th production hall with a surface of 1040m<sup>2</sup>. For 2020 and 2021 we continue expansion: we plan to build new production hall with a surface of 3500m<sup>2</sup> equipped with automatic and robotic production lines.

**YOU ARE WELCOME TO SEND US AN INQUIRY FOR FURTHER INFORMATION.**

# WHAT WE DO?



## PRODUCTION

OUR COMMITMENT TO THE DELIVERY OF **EXC4 CLASS** OF FABRICATIONS IN ACCORDANCE TO **EN-ISO:1090-2** HAS RESULTED IN BUILDING STRONG BUSINESS RELATIONSHIPS WITH A VARIETY OF CLIENTS WORLDWIDE



## ERECTION

HIGHLY TRAINED ERECTION TEAMS CERTIFIED WITH **VCA-SCC \*2008/5.1** ARE FAMILIAR WITH THE PRINCIPLES OF ON-SITE INSTALLATION ANY TYPE OF STEEL CONSTRUCTION TO PROVIDE OUR CLIENTS WITH THE BEST



## SERVICE

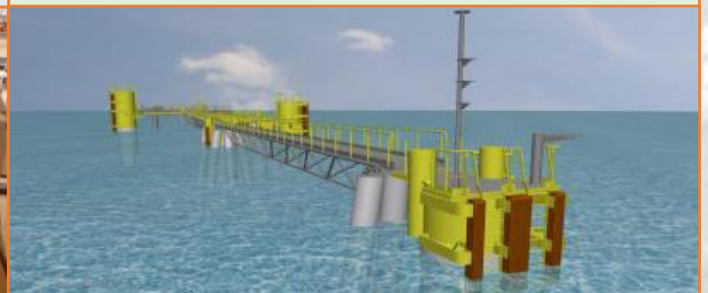
WE REALIZE SPECIALIZED WELDING SERVICES CONFORMING WITH EN 287-1/ EN 9606-1 IN COMMON METHODS: MIG 131; MAG 135,136,138; TIG 141, MMA 111; SAW 121; STUD ARC WELDING 783; AIR ARC GOUGING 871; OXYGEN CUTTING 81 – IN ALL MATERIAL GROUPS.

OUR EMPLOYEES ARE ALSO QUALIFIED PAINTERS, ASSEMBLERS, TACK WELDERS AND OPERATORS OF SKY WORKERS, FORKLIFTS AND OTHER BUILDING SITE MACHINERY AND TOOLS



## ENGINEERING

EXPERIENCED PROJECT MANAGERS ARE STRONGLY FOCUSED TOWARDS ACHIEVING THE OBJECTIVES AND SUCCESS OF THE PROJECT. THE MOST IMPORTANT MEASURE OF SUCCESS FOR US IS CUSTOMER SATISFACTION AND RETURN





## SECTORS WE SPECIALISE IN

RAILWAY, ROAD AND  
PEDESTRIAN BRIDGES



OFFSHORE, MARINE AND  
WATER BUILDING SECTOR



OIL & GAS SECTOR



ENVIRONMENTAL & ENERGY  
SECTOR



TURNKEY BUILDING,  
INDUSTRIAL & STORAGE HALLS



SKYSCRAPERS, HIGH-RISE  
BUILDINGS



INDUSTRY INSTALLATIONS



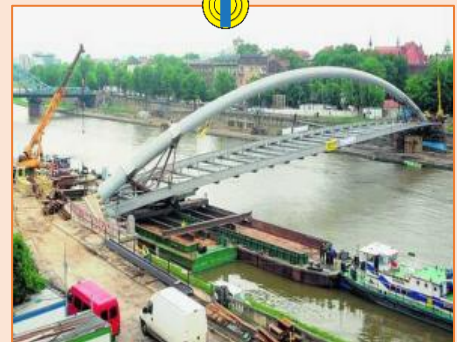
SERIAL PRODUCTION,  
SECONDARY & TERTIARY  
STRUCTURES



## OUR CHOSEN REALISATIONS



**Date:** Dec. 2009 - May 2010  
**Task:** Pedestrian & bike bridge over Vistula river, Cracow, Poland  
**Scope:** Fabrication, delivery and assembly on the site  
**Investor:** City commune of Cracow  
**Weight:** 207 tons



**Date:** May 2011 - July 2011  
**Task:** Pedestrian bridge over Metro Copenhagen Denmark  
**Scope:** Fabrication, delivery & assembly on the site  
**Investor:** KPMG  
**Weight:** 94 tons





**Date:** October 2012 - September 2013  
**Task:** **Railway bridge in Żarnowa, Poland**  
**Scope:** Fabrication, delivery & assembly on the site  
**Investor:** Polish National Railways (PKP)  
**Weight:** 298 tons



**Date:** October 2013 - October 2014  
**Task:** **Railway bridge in Terespol, Poland**  
**Scope:** Delivery of steel construction & assembly on the site  
**Investor:** Polish National Railways (PKP)  
**Weight:** 484 tons



**Date:** August 2014 - February 2015  
**Task:** **Bike bridge, Avelgem, Belgium**  
**Scope:** Fabrication & delivery  
**Investor:** Waterwaghen & Zeekanaal  
**Weight:** 167 tons



**Date:** January 2017 – August 2018  
**Task:** **Spiral footbridge Leuven, Belgium**  
**Scope:** Fabrication, delivery & assembly on-site  
**Investor:** The City of Leuven  
**Weight:** 105 tons







**Date:** June 2018 - September 2018  
**Task:** **Sint Lenaarts, Belgium**  
**Scope:** Fabrication, delivery & assembly on-site  
**Investor:** De Vlaamse Waterweg  
**Weight:** 66 tons



**Date:** June 2018 - September 2018  
**Task:** **Retie Ophaalbrug no. 2 Belgium**  
**Scope:** Fabrication, delivery & assembly on-site  
**Investor:** De Vlaamse Waterweg  
**Weight:** 60 tons



**Date:** October 2018 - February 2019  
**Task:** **Bridge on Wisłoka river, Czarna, Poland**  
**Scope:** Assembly on-site  
**Investor:** Podkarpacki ZDW  
**Weight:** 530 tons



**Date:** November 2005 - August 2006  
**Task:** **LNG Terminal, Malabo, Africa**  
**Scope:** Delivery of steel construction & secondary structures  
**Investor:** Bechtel Corporation, Houston, USA  
**Weight:** 220 tons







**Date:** May 2011 - July 2011  
**Task:** **Pile Gripper**  
**Scope:** Delivery of steel construction & assembly  
**Investor:** Centrica  
**Weight:** 250 tons



**Date:** October 2011 - April 2012  
**Task:** **New pier**  
**Scope:** Delivery of steel construction & assembly  
**Investor:** Ineos NV  
**Weight:** 134 tons



**Date:** since March 2005 & still continued  
**Task:** **Modular offshore floating platforms**  
**Scope:** Delivery of steel construction – complete with fittings  
**Investor:** Combifloat  
**Weight:** ~1000 tons per year



**Date:** October 2011 - April 2012  
**Task:** **Sea Tank Terminal**  
**Scope:** Delivery of steel construction & assembly  
**Investor:** Sea Tank Terminal NV  
**Weight:** 630 tons







**Date:** Dec 2015 – May 2016  
**Task:** **Steel construction IJsbekers**  
**Scope:** Design, workshop documentation and fabrication  
**Investor:** Vlaamse Overheid  
**Weight:** 150 t



**Date:** Oct 2017 – Jan 2018  
**Task:** **Antwerpen Marshall dok**  
**Scope:** Dukdalven, secondary steel structures  
**Investor:** Port of Antwerp  
**Weight:** 80 t



**Date:** Feb 2018 – Jul 2018  
**Task:** **Floating pontoons**  
**Scope:** Ferryboat docking pontoons  
**Investor:** De Vlaamse Waterweg  
**Weight:** 160 t



**Date:** Mar 2018 – Sep 2018  
**Task:** **SeaTank Terminal 700B Jetty**  
**Scope:** Steel construction: delivery & assembly on-site  
**Investor:** SeaTank  
**Weight:** 593 t



**Date:** Sep 2019 – May 2020  
**Task:** **Wachtplaatsen op de Ketelplaat**  
**Scope:** Fabrication, delivery and assembly of: 'Bouwen van wachtplaatsen op de Ketelplaat voor BOS and VCS'  
**Investor:** Maritieme Toegang  
**Weight:** 131 t







**Date:** February 2005 - June 2005  
**Task:** **Normandy Refinery**  
**Scope:** Delivery of steel platforms, railings, supports & ladders  
**Investor:** Total France  
**Weight:** 92 tons



**Date:** June 2004 - April 2005  
**Task:** **New CO<sub>2</sub> production facility, Włocławek, Poland**  
**Scope:** Delivery of steel platforms, railings, supports & ladders  
**Investor:** ACP NV  
**Weight:** 102 tons



**Date:** February 2005 - June 2005  
**Task:** **Three production units Antwerp, Belgium**  
**Scope:** Delivery of steel platforms, railings, supports & ladders  
**Investor:** BASF  
**Weight:** 349 tons



**Date:** November 2011 - April 2012  
**Task:** **Turnable Loading ARM & Portal Frame**  
**Scope:** Fabrication & delivery of steel structure  
**Investor:** MT Højgaard a/s  
**Weight:** 79 tons







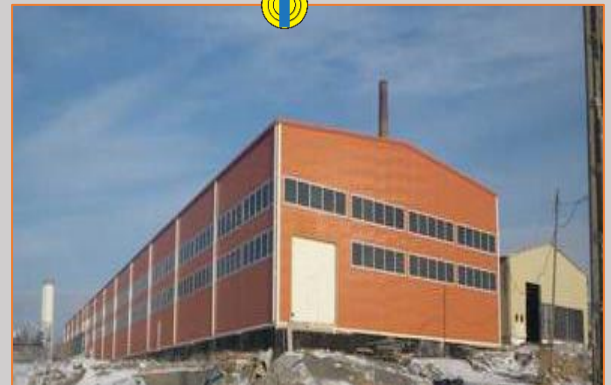
**Date:** Oct 2014 - Feb 2016  
**Task:** Steam-gas block construction for Power Plant  
**Scope:** Delivery & assembly of steel construction  
**Investor:** Power Plant Stalowa Wola  
**Weight:** 250 tons delivered



**Date:** Nov 2014 - April 2015  
**Task:** Power Station  
**Location:** Kozienice, Poland  
**Scope:** Fabrication of supporting steel structure & channels  
**Investor:** EC Kozienice  
**Weight:** 230 tons



**Date:** July 2010 - Nov 2010  
**Task:** Brick Factory Hall  
**Location:** Chmielów, Poland  
**Scope:** Fabrication & assembly  
**Investor:** ZCB Tadeusz Rucki  
**Weight:** 181,5 tons  
**Area:** 3630m<sup>2</sup>



**Date:** Nov 2010 - Nov 2011  
**Task:** Production Hall  
**Location:** Tarnobrzeg, Poland  
**Scope:** Fabrication & assembly  
**Investor:** Intop Tarnobrzeg  
**Weight:** 193,3 tons  
**Area:** 2300m<sup>2</sup>







**Date:** Mar 2015 - Sep 2015  
**Task:** **Production Hall**  
**Breshnev, Ukraine**  
**Scope:** Fabrication & assembly  
**Investor:** **Krono Ukraine**  
**Weight:** 240,0 tons  
**Area:** 5800m<sup>2</sup>



**SKYSCRAPERS**  
**HIGH-RISE**  
**BUILDINGS**

**Date:** May 2014 - Nov 2015  
**Task:** **Q22**  
**Warsaw, Poland**  
**Scope:** Fabrication of the building steel structure  
**Investor:** **Echo Investment**  
**Weight:** 1150 tons



**INDUSTRY**  
**INSTALLATIONS**

**Date:** March 2016  
**Task:** **Piping replacement**  
**Mielec, Poland**  
**Scope:** Maintenance  
**Investor:** **Kronospan**



**SERIAL PRODUCTION**

**Tasks:** **Secondary structures:**  
**platforms, hand railings,**  
**ladders, trusses & other**  
**Scope:** Fabrication,  
protective coating  
**Weight:** ~350 tons per year







## ERECTION



**Date:** April 2015  
**Task:** **Waaslandsluis  
Kallo, Belgium**  
**Scope:** Erection of wheel fenders  
structure & supports  
**Investor:** THV Waaslandsluis  
**Weight:** 1125 tons



**Date:** April 2016  
**Task:** **Road viaduct,  
Wieluń, Poland**  
**Scope:** Erection of the viaduct  
over road S8  
**Investor:** GDDKiA Łódź  
**Weight:** 120 tons



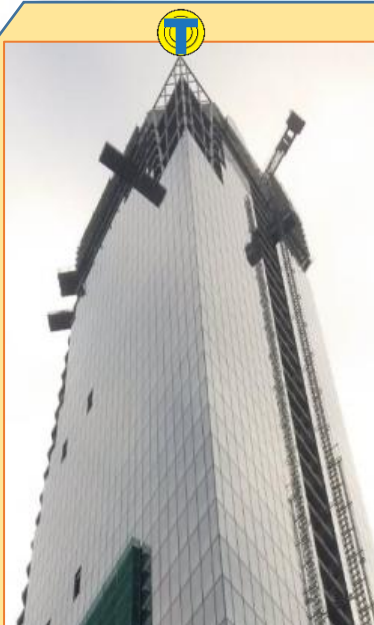
**Date:** Nov 2011  
**Task:** **Road bridge over  
Kanał Żerański  
Warsaw, Poland**  
**Scope:** Erection of the bridge  
**Investor:** GDDKiA Łódź  
**Weight:** 121 tons



**Date:** June 2015  
**Task:** **Bike bridge  
Avelgem, Belgium**  
**Scope:** Erection of the  
bridge  
**Investor:** Waterwagen  
& Zeekanaal  
**Weight:** 167 tons







**Date:** May 2014 – Nov 2015  
**Task:** Q22  
**Warszawa, Polska**  
**Scope:** Erection of steel construction of skyscraper Q22  
**Investor:** Echo Investment  
**Weight:** 1150 tons



**MODZELEWSKI & RODEK**  
 Spółka z o.o.

02-822 Warszawa  
 ul. Polećki 35

tel. (22) 531 65 55  
 fax (22) 531 65 51

mod@modze.pl

BUDOWA: Q22 – al. Jana Pawła II, róg ul. Grzybowskiej w Warszawie

Warsaw, December the 1st 2015

#### REFERENCE LETTER

MODZELEWSKI & RODEK Sp. z o.o. located in Warsaw at 35 Polećki Street certifies that TARKON Sp. z o.o. located in Tarnobrzeg at 5 Mechaniczna Street executed investment task – „Construction of Q22 office, retail and commercial building at Grzybowska Street and Jan Pawel II Avenue” in Warsaw” between May 2014 and November 2015 – delivery and assembly of steel construction

#### Tasks:

- Delivery and assembly of steel cores of composite columns – approx. 980 T.
- Delivery and assembly of oblique facades steel substructure including anticorrosion protection – approx. 50 T.
- Delivery and assembly of corner „sklybar” construction including anticorrosion protection – approx. 20 T.
- Delivery and assembly galvanized steel structure forming the roof of the building – approx. 20 T.
- Delivery and assembly steel construction of the mast – approx. 15 T.
- Secondary construction forming equipment of building and auxiliary construction for execution of reinforced concrete works – approx. 60 T.

The total value of works: 7.451.037,75 PLN

The scope of the task has been executed by the company with due care, reliably and on schedule. The company has shown high technical qualification both at designing stage and execution. The high quality of service allows to recommend with full responsibility TARKON Sp. o.o. as a responsible and reliable partner in the implementation of difficult construction tasks.

Yours faithfully

MODZELEWSKI & RODEK Sp. z o.o.  
 KIEROWNIK PROJEKTU  
 mgr inż. Marek Skabki

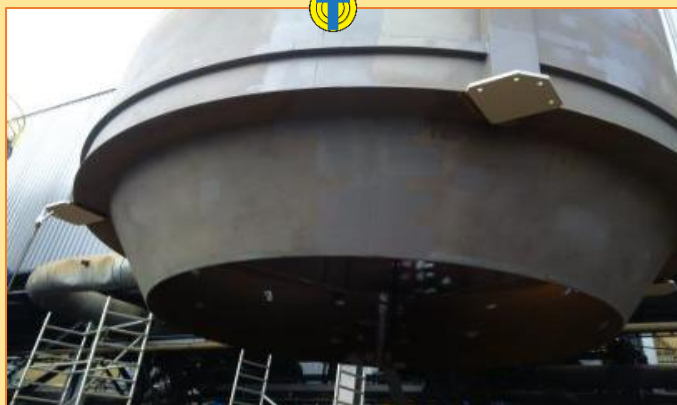




**Date:** Feb 2006 - June 2005  
**Task:** **Power Station  
Le Havre, France**  
**Scope:** Assembly of supporting  
steel structure,  
SCR, flue tubes  
**Investor:** **Electricité de France**  
**Weight:** 1020 tons



**Date:** Nov 2015 - May 2015  
**Task:** **Power Station  
Siekierki, Poland**  
**Scope:** Assembly of supporting  
steel structure & vessel  
**Investor:** **EC Siekierki**  
**Weight:** 212 tons



**Date:** Oct 2014 - Feb 2016  
**Task:** **Steam-gas block  
construction for  
Power Plant  
Stalowa Wola, Poland**  
**Scope:** Assembly  
of steel construction  
**Investor:** Power Plant Stalowa Wola  
**Weight:** 470 tons assembled



**Date:** Jan 2020 – in progress  
**Task:** **Installation of  
environmental protection  
(UTWS filter technology)**  
**Scope:** Dismantling and assembly  
of steel construction  
**Investor:** Kronospan Riga, Latvia  
**Weight:** 1770 tons







## SERVICE

- ✓ OUR SERVICE PERSONNEL IS IN POSSESSION OF **VCA/SCC** CERTIFICATES, FOR CONTINUOUS IMPROVEMENT WE ARE PROVIDING THEM WITH REGULAR **HSE** TRAININGS



- ✓ TEAMS OF WELDERS IS CERTIFIED AS CONFORMING STANDARD **EN 287-1/ EN 9606-1** IN COMMON METHODS:

**MIG 131; MAG 135,136,138; TIG 141, MMA 111; SAW 121; STUD ARC WELDING 783; AIR ARC GOUGING 871; & OXYGEN CUTTING 81** – IN ALL MATERIAL GROUPS

- ✓ OUR EMPLOYEES ARE QUALIFIED: SKY WORKERS, FORKLIFTS, CRANES - OPERATORS, RIGGERS, TACK WELDERS – WITHIN ASSEMBLING AND ERECTION ACTIVITIES.

- ✓ FOLLOWING SCOPE OF SERVICES WE CAN PROVIDE YOU WITH:

- ❖ WELDING (ALL TYPES OF STEEL AND ALLOYS),
- ❖ PAINTING (ABRASIVE BLASTING, METALLIZATION, AIRLESS SPRAY PAINTING)
- ❖ FITTING AND PIPING WORKS.
- ❖ MECHANICAL WORKS AND MACHINING,
- ❖ ALL KIND OF ASSEMBLING – MOUNTING
- ❖ SUPPORT BY OUR ENGINEERING – DESIGN
- ❖ & PROJECT MANAGEMENT



## ENGINEERING



### PEDESTRIAN BRIDGE MODEL

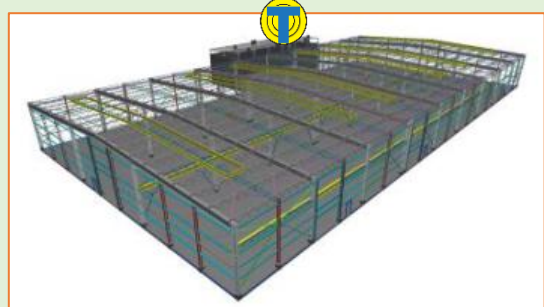
\* THIS PROJECT WON SPECIAL AWARD ON:

**TEKLA BIM AWARDS 2015 POLAND**  
IN 'INFRASTRUCTURAL PROJECTS' CATEGORY

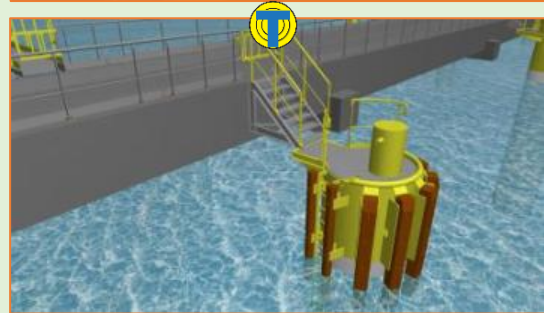
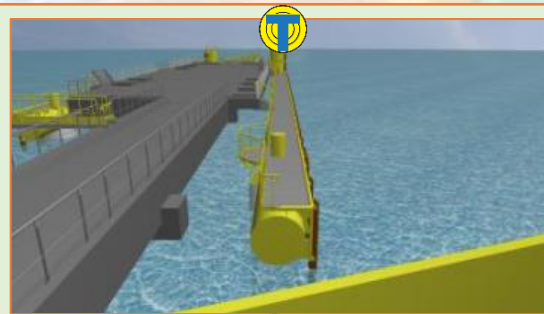




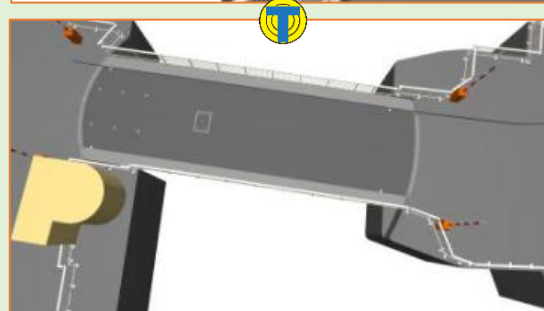
## PRODUCTION HALL MODEL



## OIL TANKING MODEL



## ‘BATTELBRUG’ BRIDGE MODEL





## PRODUCTION ASSETS & CAPACITY:

- QUALITY CONTROL DEPARTMENT – WELDING ENGINEERS FOR VT, MT, PT AND UT – NDT METHODS
  - POSSIBILITY OF FLAME CUTTING BY CNC ECKERT JANTAR 2 TABLE DIMENSIONS 12\*3M
  - AUTOMATIC LINE FICEP LP A15 FOR CUTTING, PUNCHING L AND C PROFILES
  - SYNERGIC SEMI AUTOMATS WELDING MACHINES LINCOLN, KEMPI AND OTHER
  - WELDING SEMI AUTOMATS MIG TIG LINCOLN, EWM, ESAB AND OTHERS
  - SAW WELDING MACHINE LINCOLN
  - STUD ARC WELDING MACHINE ELOTOP 3010
  - UNIVERSAL TURNING MACHINE MAXIMUM DIMENSION AND LENGTH MACHINED ELEMENTS FI400 L1500MM
  - CRANES 5TONS, 10TONS AND 20TONS – LIFTING CAPACITY UP TO 40 TONS AND MORE BY MOBILE CRANES
  - GUILLOTINE, CUTTING LENGTH 3M - PRESSURE 200TONS
  - HYDRAULIC PRESS - 200 TONS
  - PIPE/TUBE BENDING MACHINES ERCOLINA – 2 PCS FOR PRECISE BENDING OF PIPES, PIPE CUTTERS, GRINDERS ETC.
  - UNIVERSAL MACHINE GEKA SD110 FOR CUTTING AND PUNCHING
  - SAWING MACHINES BOMAR 3 PIECES POSSIBILITY OF CUTTING TILL 600MM
  - BEVELING MACHINES
  - VOORTMAN V630/VB1050 AUTOMATIC CUTTING AND DRILLING LINE FOR PROFILES
  - VOORTMAN V200 AUTOMATING DRILLING LINE FOR PLATES
  - METALLIZATION UNIT OSU-300A HESSLER ANTICOR AND ARCSPRAY 140 METALLIZATION
  - PROFESSIONAL HIGH STANDARD GRIT BLASTING, METALLIZATION & PAINTING CABINS 6M\*5M\*18M BY SciTeeX, HEATERS AND DEHUMIDIFIERS OF AIR FOR PROFESSIONAL REALIZATION COATING WORKS AND OWN INSPECTION SURVEYOR – FULL MEASURING EQUIPMENT AND REPORTING.
  - WELDING TURNING MANIPULATOR TILL 1000 KG
  - ROLLER ROTATOR 30T – 3 SETS
  - AIR – FILTERING SYSTEMS IN WORKSHOP; SPECIAL PAINT-STORAGE BUILDING; STAINLESS-STEEL WORKSHOP ETC.
  - PROFESSIONAL PAINT BOOTH EQUIPPED WITH AIRLESS AND 2K PAINTING SYSTEMS.
  - SOLVENT DISTILLER UNIT – FOR RECYCLING OF CHEMICALS & KEEPING THE ENVIRONMENT SAFETY.
- 
- CAPACITY 7 000 T/YEAR DEPENDING KIND OF PROJECTS
  - WORKFORCE – 120-150
  - PRODUCTION AREA – 10.000m<sup>2</sup>



# CERTIFICATES & AUTHORISATIONS:

## THE HIGH QUALITY OF PRODUCTS IS CONFIRMED WITH THE FOLLOWING CERTIFICATES:

- CERTIFICATE AND APPROVAL FOR WELDING TECHNOLOGIES FROM DNV-GL FOR FABRICATION OFFSHORE AND ONSHORE CONSTRUCTIONS
- INTERNATIONAL ORGANIZATION FOR STANDARDIZATION CERTIFICATE FOR MANUFACTURING STEEL CONSTRUCTIONS: ISO 9001:2015 ISSUED BY DNV-GL
- AUTHORIZATION FOR FABRICATION OF BRIDGES ACCORDING TO NORM PN-89/S-10050 BY IBDiM
- CE CERTIFICATION – (CONFORMITÉ EUROPÉENNE) - COMPLIANCE FOR STEEL CONSTRUCTION FABRICATION – STRUCTURAL COMPONENTS AND KITS FOR STEEL STRUCTURES TO EXC4 ACCORDING TO EN 1090-2: 'CONFORMITY OF THE FACTORY PRODUCTION CONTROL', ISSUED BY DVS ZERT GMBH:



- CE WELDING CERTIFICATION – (CONFORMITÉ EUROPÉENNE) - COMPLIANCE FOR WELDING USING PROCESSES: 111, 121, 135 - TO EXC4 ACCORDING TO EN 1090-2, ISSUED BY DVS ZERT GMBH
- DIN EN ISO 3834-2 – CERTIFICATE OF COMPLIANCE WITH QUALITY REQUIREMENTS FOR FUSION WELDING OF METAL MATERIALS
- ISO 14001:2015 ISSUED BY DNV – CERTIFICATE OF ENVIRONMENTAL MANAGEMENT SYSTEM STANDARD
- ISO 45001:2018 ISSUED BY DNV – CERTIFICATE OF OCCUPATIONAL HEALTH & SAFETY MANAGEMENT SYSTEM:







## CONTACT US

TARKON SP. Z O.O.  
MECHANICZNA 5  
39-400 TARNOBRZEG  
POLAND

[www.tarkon.pl](http://www.tarkon.pl)

TECHNICAL DEPARTMENT: [admin.project@tarkon.pl](mailto:admin.project@tarkon.pl)  
SECRETARY OFFICE: [mail@tarkon.pl](mailto:mail@tarkon.pl)

tel. (+48 15) 822-98-52  
fax. (+48 15) 855-41-49

**We hope that the above information has encouraged you  
to cooperate with our Company.**

**For any further information or demand for quotation, we will appreciate your response  
and will reply as soon as possible.**



